

MEGA GRID LOCK

TRUSS & STRUCTURES



SHOWSDT
Scene Design & Technology

MEGA GRID LOCK

The Mega-Gridlock is intended for a permanent installation in theatres and studios. It creates a 90 degree connection between two pipes that are overlapping. As a wrench, the side grooves prevent the nut from twisting during installation.

Any combination of 1-1/2" pipes (1.9" OD), 1-1/4" pipes (1.66" OD), and 2" OD Tubes can be fastened (tight fit on 2" OD tube).



The Standard configuration comes with:

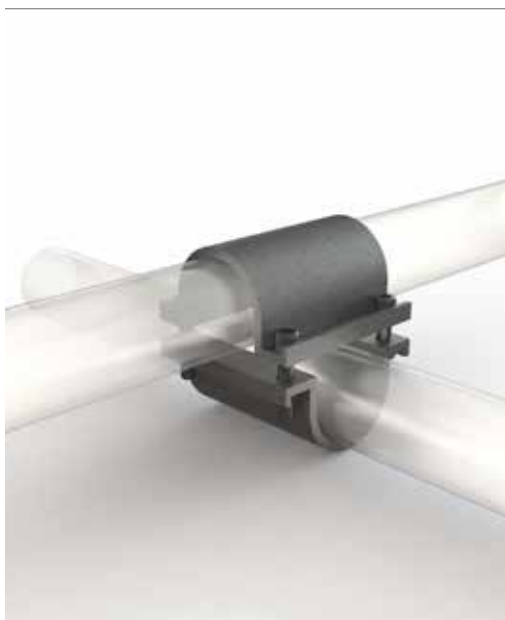
FEATURES

- Minimum Size: 1.25" pipe, (1.66" OD)
- Maximum Size: 1.5" pipe, (1.90" OD), 2" OD tube
- Working Load Limit: 1250 lbs 568kg
- Dimensions: 3.65" x 3.65" x 4.375" tall max
- Weight: 1.03 lbs

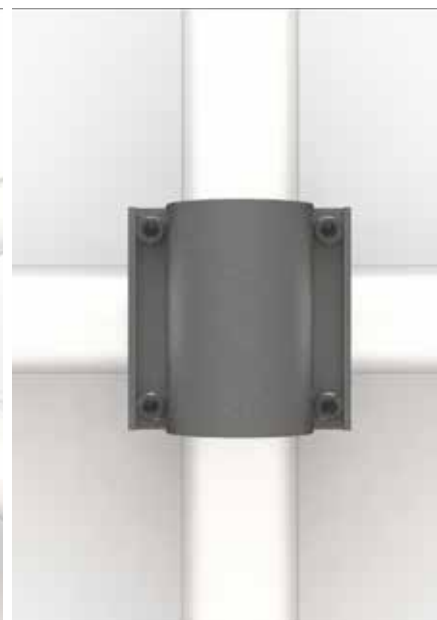
MEGA GRID LOCK



FRONT VIEW



SIDE VIEW



TOP VIEW

TECHNICAL DATA

● Model N°	
● MGM Mega-Gridlock	Silver
● MGB Mega-Gridlock	Black Anodized
● MGMSS Mega-Gridlock	Stainless Steel Hardware, Silver
● MGW Mega-Gridlock	White Powder Coat