

PIPE CLAMP

TRUSS & STRUCTURE



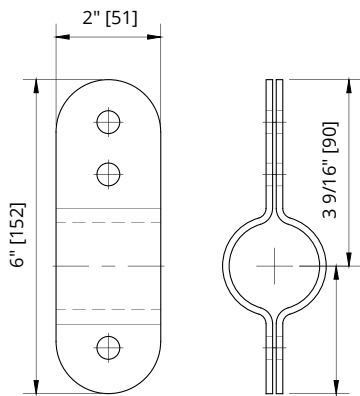
PIPE CLAMP

JOEL Pipe Clamps provide a secure connection to a pipe batten, fully encircling the batten to prevent the connection from sliding.

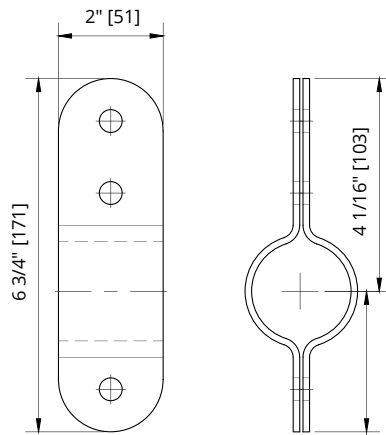
Used for counterweight, dead hang rigging, pipe girds, fire curtains and scenery suspension.

FEATURES

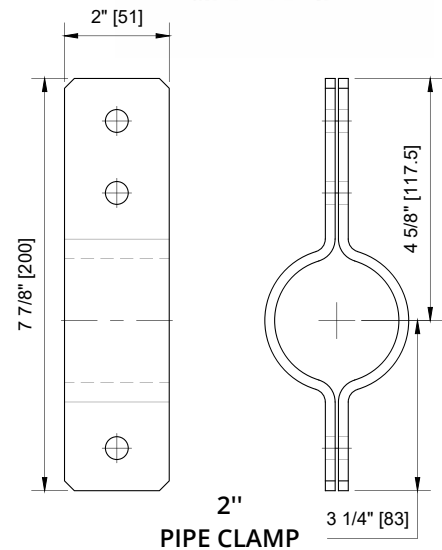
- Steel clamps with black finish
- Full clamps have rounded corners
- Supplied with 3/8" x 1 1/4" grade 5 bolts, lock washers and nuts and a 7/16" hole to connect a shackle.
- Pipe clamps are 12 gauge steel



1 1/4"
PIPE CLAMP



1 1/2"
PIPE CLAMP



2"
PIPE CLAMP

TECHNICAL DATA

Model N°	Description	SWL*	Weight
• 2814-J	1.25" (31.75 mm) Joel pipe clamp	750 lbs (340 kg)	1 lb (0.45 kg)
• 2815-J	1.5" (38.1 mm) Joel pipe clamp	750 lbs (340 kg)	1 lb (0.45 kg)
• 2816-J	2" (50.8 mm) Joel pipe clamp	750 lbs (340 kg)	1 lb (0.45 kg)

*SWL: maximum load that can be applied to the pipe clamp which is in "like new" condition and has been properly installed, maintained, and operated.