

MICRO+G2

AUTOMATION CONSOLE



AUTOMATION CONSOLE

MICRO+G2

The Micro+G2 automation console brings new features for operator comfort and improved functionality for a more ergonomic grip. This version includes 2 elegant joysticks for effortless movement, but also 2 HTR (Hold To Run) buttons for manual control.

The Micro+G2 is the perfect console for all locations where the operator needs mobility, such as arenas, large and small theatres, etc.



The Standard configuration comes with:

FEATURES

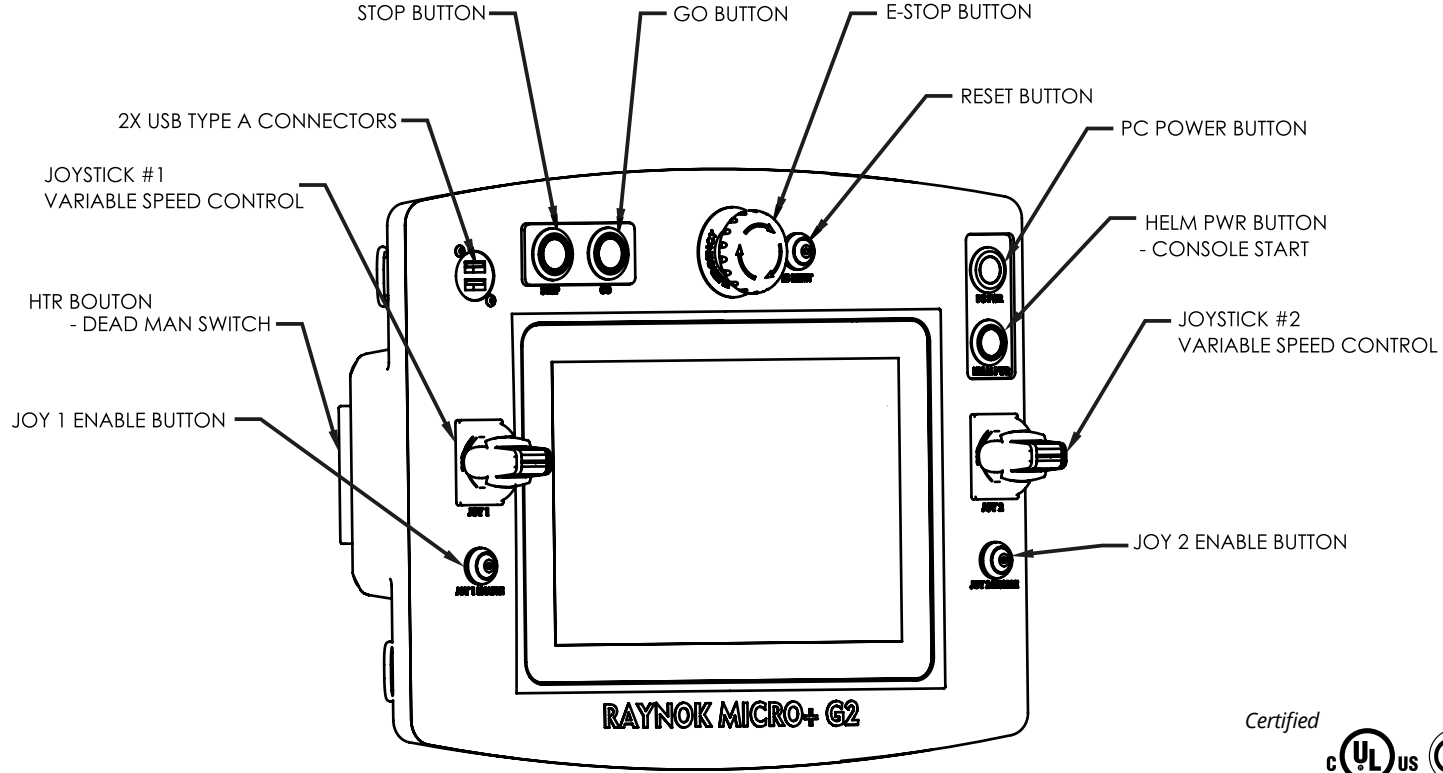
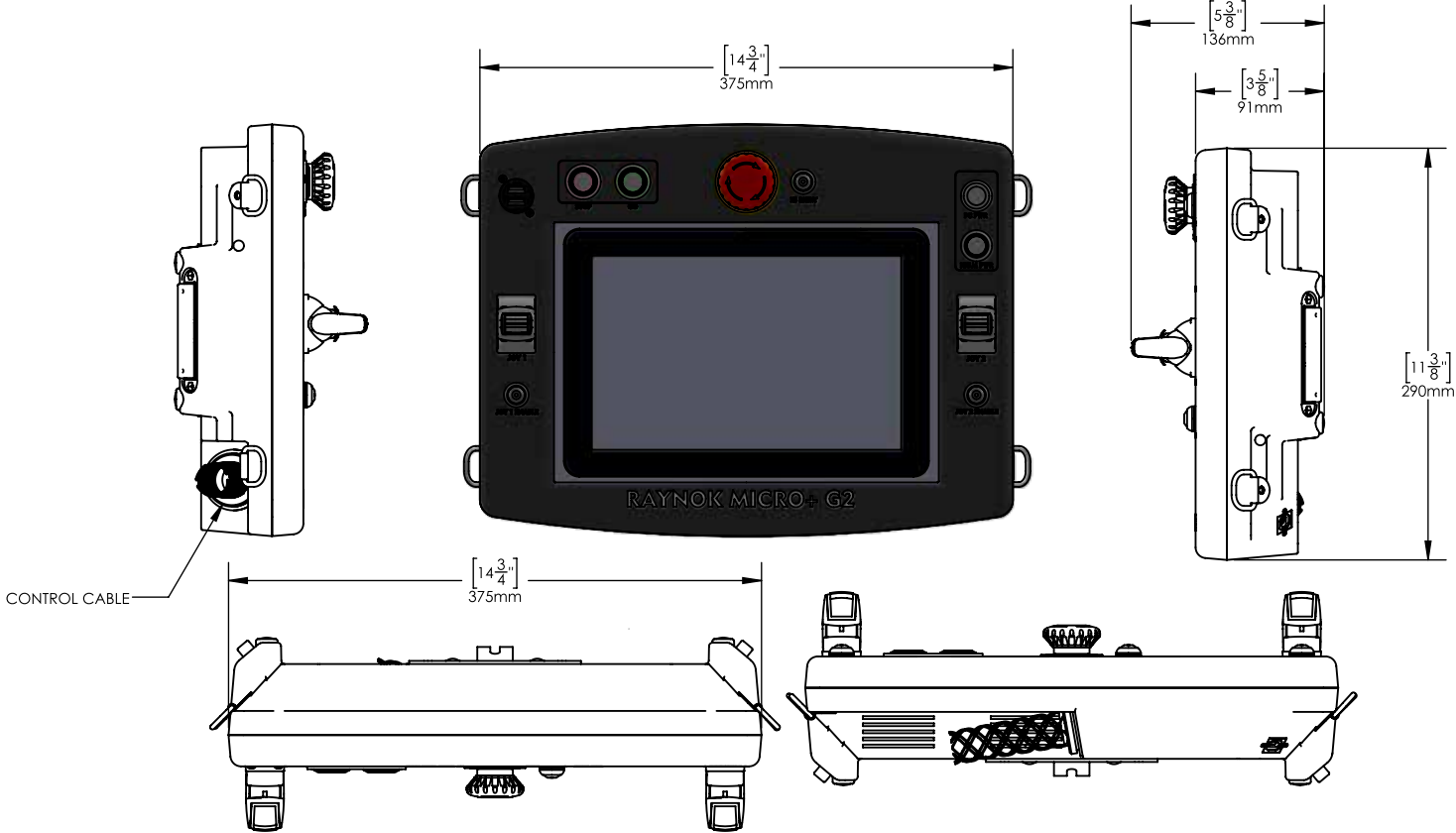
- **Processors:** 1 each Intel™ i5 Haswell
- **Monitors:** 1 each 10" TFT Active Capacitive Touch
- **Macro buttons:** 4 dedicated
- **Hold-To-Run:** Active at all times
- **Joysticks:** 2 paddle style, assignable to variety of commands
- **Emergency Stop System Controls:** Active integrated controls for RESET
- **System Alarm:** Configurable Audible and Visual
- **Included Accessories:** Carry/Storage Case with protective foam insert
- **USB Ports:** 2 external
- **Network Ports:** 2 each for NETA & B
- **Power Source:** Universal Power Supply with isolation 90-230V 50/60Hz
- **Dimensions & Weight:** 15"W x 11.75"H x 5.25"D (381 x 299 x 140mm), 6.2lbs / 2.8kg
- **Colour:** RAL7021 black Gray

Certified



SHOWSDT

AUTOMATION CONSOLE MICRO+G2

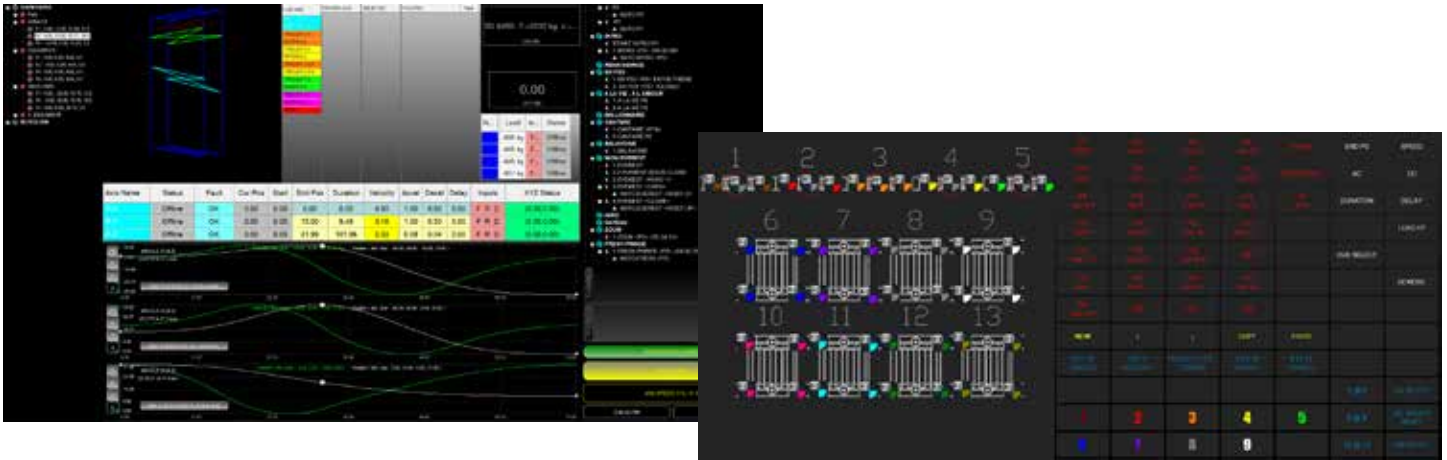


AUTOMATION CONSOLE SOFTWARE

MICRO+G2

The IMPERIUM runs the acclaimed Raynok Software in a compact and feature rich package.

Make it simple, customize the layout with buttons or lists, create flashing macros, access all machinery at once, or focus on a single hoist, configure constraints and interlocks to protect process... Raynok is configurable, customizable, intuitive, creative and the only software tool you'll need for controlling stage machinery. And of course Engineer The Art Of Movement for your production.



SPECIFICATIONS

Type of Software:

Control Solution for stage and entertainment related machinery.

Developer:

Niscon Inc., Burlington, Ontario, Canada

Applications:

Live Theatres, Concerts, Touring Productions, Television Studios, Circus Acts, Performer Flights, Animatronic Support, Museums, Sports Arenas, Night Clubs, Day Clubs, Kinetic Sculptures and more.

Versions / Models:

R2D for basic motion, R3D for 3D motion & Performer Flight

Largest Installation:

327 hoists, 6 consoles, 1 server, 3 interlocked E-Stop Systems.

Largest Wireless Installation:

118 hoists, 5 consoles, 1 server.

Largest number of simultaneous Performer Flights:
14 (6 single lines, 8 multiple line).

External Connections and Data Transmissions:

Transmit position data, run commands or status information via, DMX via USB interface, DMX over ArtNET, PosiStageNet or our own External Command Manager via UDP.

Common Machines Controlled:

Wire Rope Hoists, Chain Hoists, Performer Hoists, Spiralift™, Serapid™, Hydraulics, Pneumatics, Rollers (curtains), Banners, Stage Lifts, Trolleys, Cable Reels, and so much more.

Training:

1 to 2 days basic operation, 4 to 5 days Performer Flight, 1 to 2 days maintenance and support, 2 add-on days for train the trainer.

Certified

