

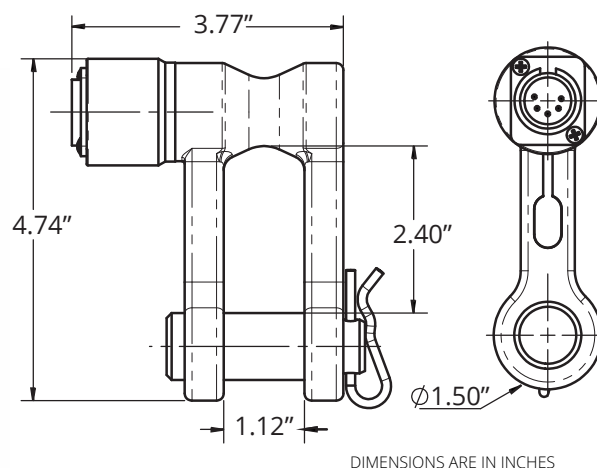
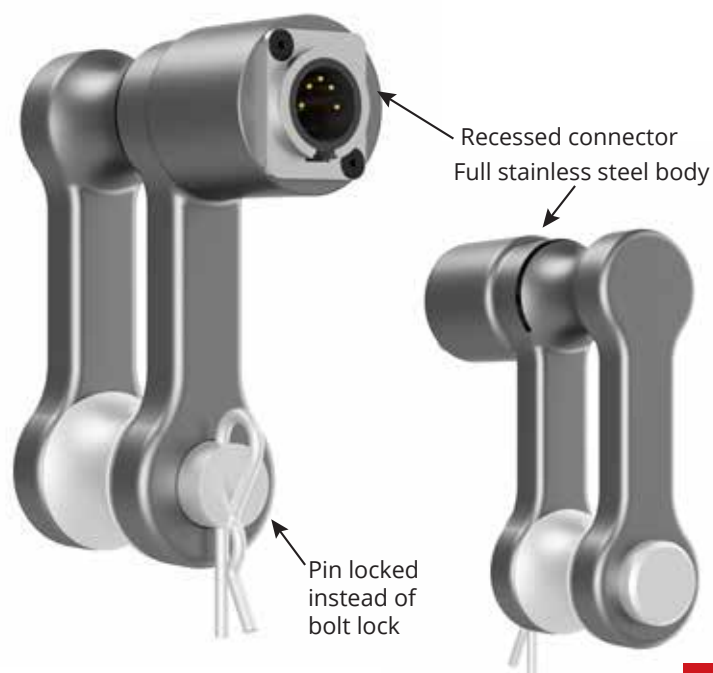
DOG BONE

LOAD MONITORING



LOAD MONITORING DOG BONE

The Dog Bone load cell improves upon the traditional load pin arrangement used to measure tensile forces on cranes, hoists, and other lifting devices. The unique shackle body design consists of dual sensing elements built into each leg of the shackle and provides accuracy up to 0.15% over ranges from 1,000 to 6500 lbs.



TECHNICAL DATA

● Output	4-20 mA (3-wire)
● Supply voltage	14-40 VDC
● Precision	±2% FSO
● Operating temperature	-50 to + 250°F (-46 to +121°C)
● Compensated temperature	+60 to +160°F (+15 to +71°C)
● Safety factor	10:1 @ 2 tons

The Standard configuration comes with:

FEATURES

- Capacity of 6500 lbs
- Double strain gauge sensor
- Unaffected by side-loading
- Standard XLR-5 connector

Load Display:

- 6 digits 7-Segments display
- Wall mount touch screen
- DLC-8 with web-based interface

Lood Cell Dog Bone 6500LBS PinOut

PINS	COLOR	UTILITY
1	BLACK	POWER 14-40 VDC
2	GREEN	SIGNAL
3	WHITE	OVDC
4	N/A	N/A
5	N/A	N/A
BODY	SHIELD	SHIELD